

Backtest for HFT Prop Firm EA MT4



Introduction

HFT Prop Firm EA is a EA designed to pass evaluation of proprietary trading firm challenges that allow use of High Frequency trading technique.

HFT Prop Firm EA is able to hit profit target within a short period of days with very low drawdown. In some cases, profit target of 1 phase can be achieved within 1 trading day. We use special AI HFT strategy that detect large movements and employ stop loss to protect your equity. It has build-in equity protector and a notifier which send you a notification on your mobile MetaTrader app when it hit profit target.

It comes with a power profit based money management strategy, this unique features enable you to reach challenge profit target faster without incurring extra high drawdown, we call it Profit Ratio Money Management (PRMM). This bot starts working in late Asian trading session to late New York Session, possibly make 100% profit on prop firm HFT account and able to pass prop firm HFT evaluation account with less then 1 hour.

Highly Recommended HFT Prop Firms to use HFT Prop Firm EA on:

Infinity Forex Funds (Algo Evaluation)

Nova Funding (1-Step, they are ceasing to provide HFT evaluation account soon)

Quantec Trading Capital (One Step Challenge)

Social Trading Club Funding (One Step Challenge)

I have tested HFT Prop Firm EA to pass the above account.

Also Possible use on these HFT Prop Firms:

mdp Funding

Not recommended:

Next Step Funding (high slippage)

Backtest

Use \$1000

HFT Prop Firm EA

Testing Inputs Optimization

Initial deposit: 1000 USD

Positions: Long & Short

Optimization

Optimized parameter: Balance

Genetic algorithm

Note: use 1 day for the date range, one day that is near to the current date. If you use too old date, you broker may not have tick data for you.

Default Setfile settings:

HFT Prop Firm EA

Testing Inputs Optimization

Variable	Value	Start	Step	Stop
-----Money Management-----				
<input type="checkbox"/> Money Management Mode	Profit Ratio	Fixed Lot		Fixed Lot
<input type="checkbox"/> Fixed Lot				
<input type="checkbox"/> Fixed Lot Size	0.25	0.1	0.0	0.0
-----Profit Ratio Money Management (PRMM)-----				
<input type="checkbox"/> Prop Firm Account Size	1000.0	200000.0	0.0	0.0
<input type="checkbox"/> Minimal Profit in % to start Profit Ratio	1.0	1.0	0.0	0.0
<input type="checkbox"/> Lot Size increase per 1000\$ of profit	0.25	0.25	0.0	0.0
-----Account Management-----				
<input type="checkbox"/> Pause EA when Today Max Drawdown hit	5.0	500.0	0.0	0.0
<input type="checkbox"/> Stop EA when Account Balance achieved	9999999999.0	220500.0	0.0	0.0
-----Trades-----				
<input type="checkbox"/> Max Spread	160.0	160.0	0.0	0.0
<input type="checkbox"/> Magic Number	169650	169650	0	0
-----SL, TP and Trailing Stop-----				
<input type="checkbox"/> Stop Loss (Point)	15.0	15.0	0.0	0.0
<input type="checkbox"/> Trailing Stop (point)	20.0	20.0	0.0	0.0
<input type="checkbox"/> Trailing Step (point)	10.0	10.0	0.0	0.0
<input type="checkbox"/> Trailing Start Above Breakeven (point)	5.0	5.0	0.0	0.0
-----Strategy-----				
<input type="checkbox"/> Use EMA as Trend Confluence	false	false	true	
<input type="checkbox"/> EMA Period	5	5	0	0
<input type="checkbox"/> Surge Period	7	7	0	0
<input type="checkbox"/> Surge Offset	25.0	25.0	0.0	0.0
<input type="checkbox"/> Range Level	20.0	20.0	0.0	0.0
<input type="checkbox"/> Gap for Surge (point)	2	2	0	0
<input type="checkbox"/> OpenSpeed (1 to 20, 1 is fastest)	2.0	2.0	0.0	0.0
-----Day and Time Restriction-----				
-----Time Allow-----				
<input type="checkbox"/> Start From Hour	9	9	0	0
<input type="checkbox"/> Start From Minute	0	0	0	0
<input type="checkbox"/> End at Hour	22	22	0	0
<input type="checkbox"/> End at Minute	59	59	0	0
-----Day Allow-----				
<input type="checkbox"/> Allow Monday	true	false	true	
<input type="checkbox"/> Allow Tuesday	true	false	true	
<input type="checkbox"/> Allow Wednesday	true	false	true	
<input type="checkbox"/> Allow Thursday	true	false	true	
<input type="checkbox"/> Allow Friday	true	false	true	
<input type="checkbox"/> Allow Saturday	false	false	true	
<input type="checkbox"/> Allow Sunday	false	false	true	

Load Save

OK Cancel Reset

Test Server: EightCapLtd-Demo04 (Actual Infinity Forex Fund evaluation server):

Expert Advisor

Symbol:

Model:

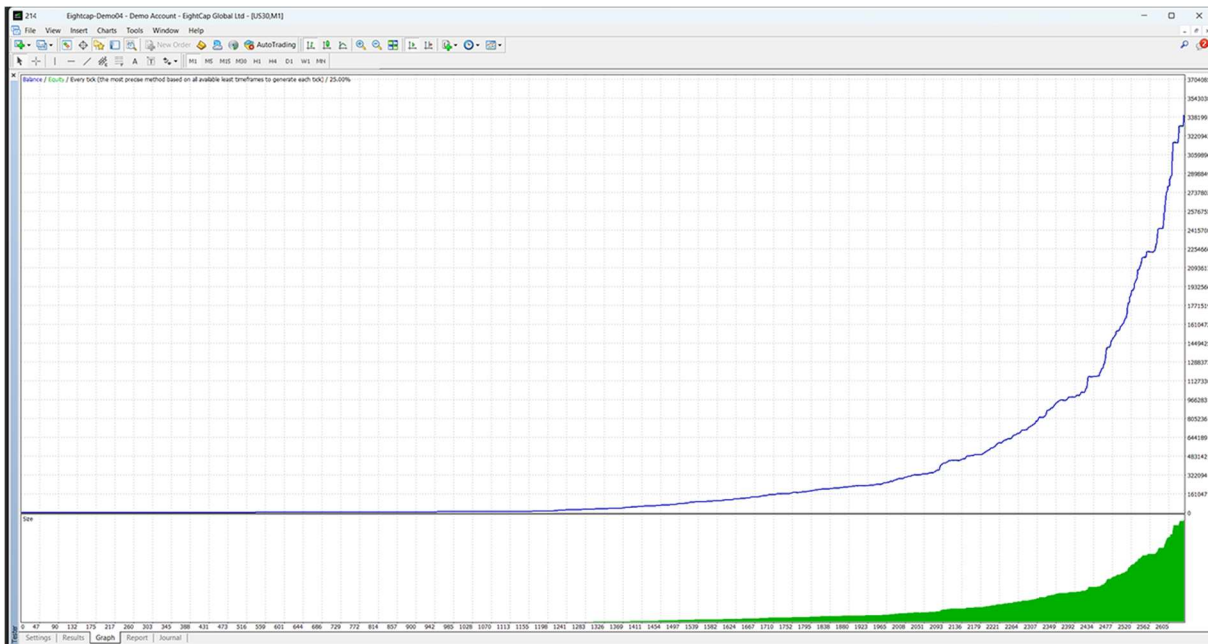
Use date From: To:

Visual mode

Period:

Spread:

Optimization



Test Server: EightCapLtd-Demo04 (Actual Infinity Forex Fund evaluation server):

Expert Advisor: HFT Prop Firm EA ex4

Symbol: GER30.i, GER30 Cash

Model: Every tick (the most precise method based on all available least timeframes to generate each tick)

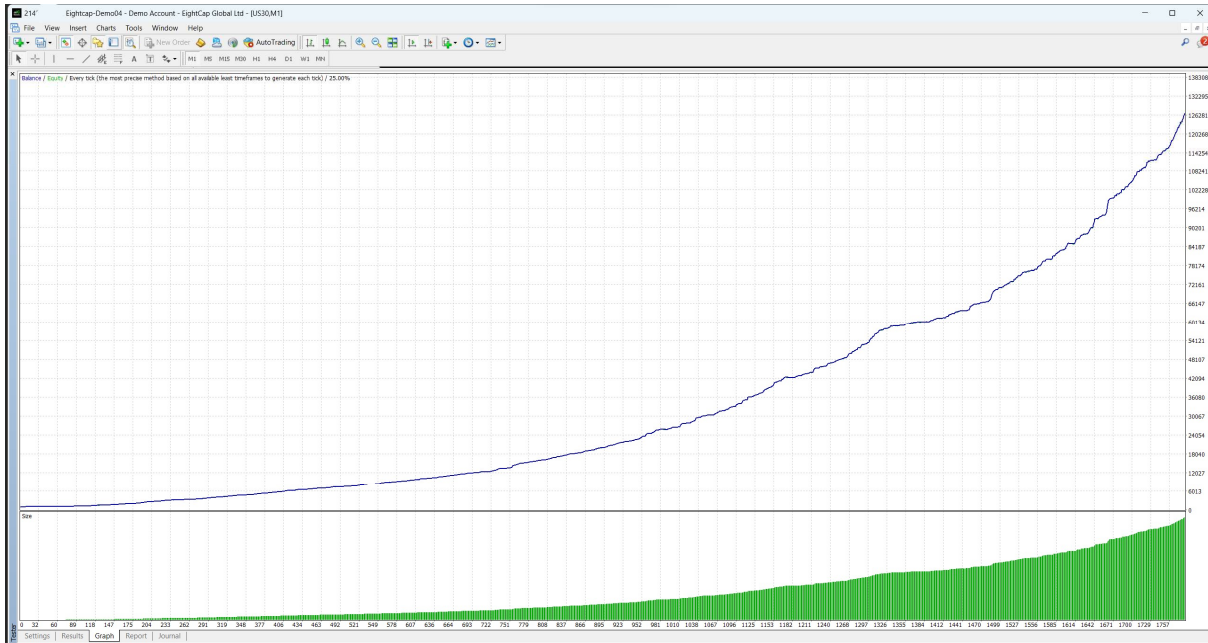
Use date From: 2023.09.22 To: 2023.09.23

Visual mode 2023.09.23

Period: M1

Spread: 30

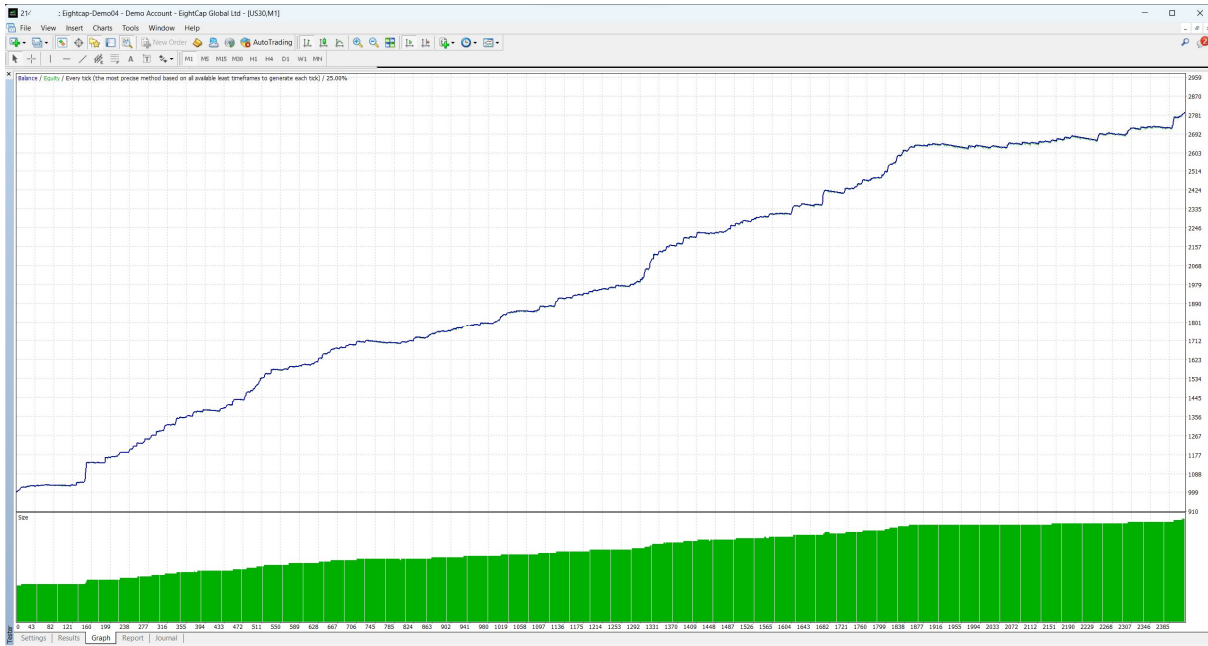
Optimization



Test Server: EightCapLtd-Demo04 (Actual Infinity Forex Fund evaluation server):

Expert Advisor	HFT Prop Firm EA.ex4		
Symbol:	UK100.i, UK100 Cash		
Model:	Every tick (the most precise method based on all available least timeframes to generate each tick)		
Use date <input checked="" type="checkbox"/>	From:	2023.09.22	To: 2023.09.23
Visual mode <input type="checkbox"/>			Skip to 2023.09.23

	Expert properties
Period: M1	Symbol properties
Spread: 50	Open chart
Optimization <input type="checkbox"/>	Modify expert



Test Server ICmarkets Live Server

Expert Advisor

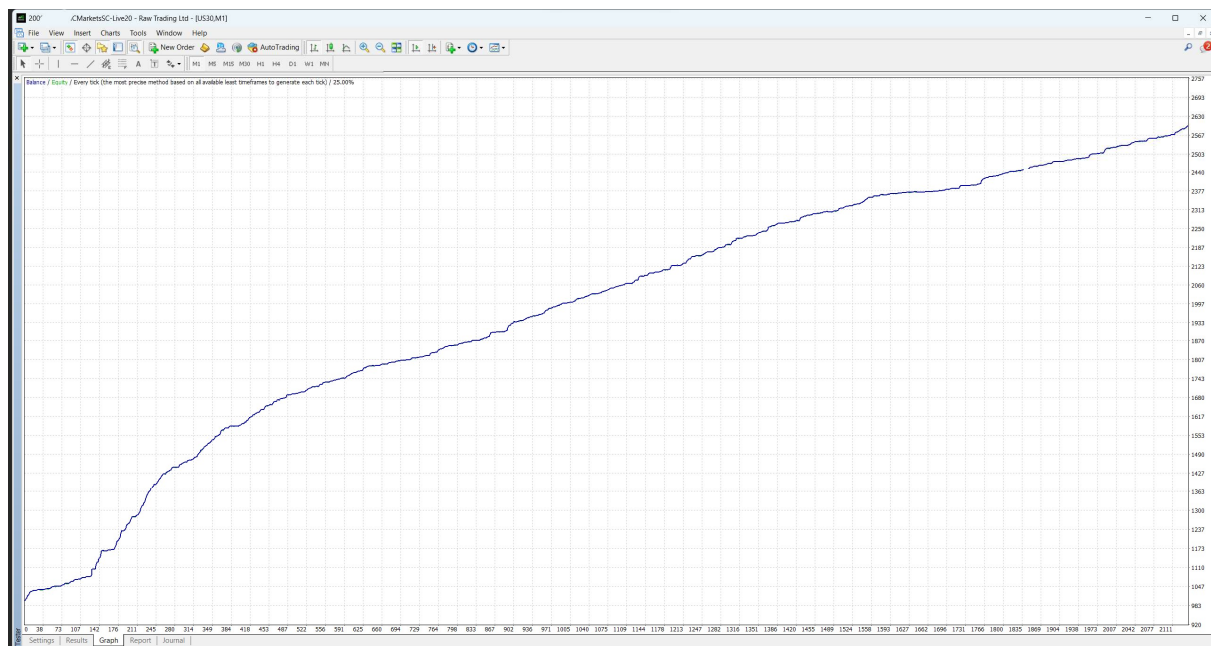
Symbol:

Model:

Use date From: To:

Visual mode

	▼	Expert properties
Period:	M1 ▼	Symbol properties
Spread:	50 ▼	Open chart
Optimization	<input type="checkbox"/>	Modify expert



Test Server ICMarkets Live Server

Expert Advisor **HFT Prop Firm EA.ex4**

Symbol: **US30, US Wall Street 30 Index**

Model: **Every tick (the most precise method based on all available least timeframes to generate each tick)**

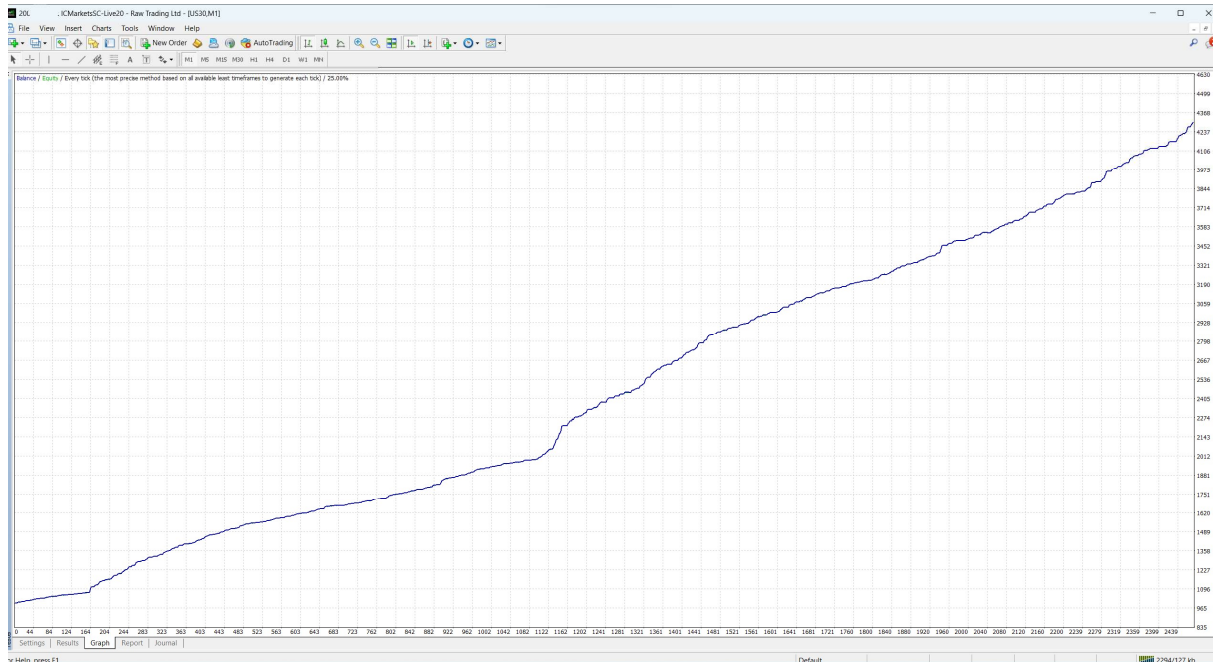
Use date From: **2023.09.22** To: **2023.09.23**

Visual mode

Period: **M1**

Spread: **50**

Optimization



Test Server: FusionMarkets-Demo

Expert Advisor ▼ HFT Prop Firm EA ex4

Symbol: US30, US 30 Index

Model: Every tick (the most precise method based on all available least timeframes to generate each tick)

Use date From: 2023.09.22 📅 To: 2023.09.23 📅

Visual mode ▬ ⏸ Skip to 2023.09.23 📅

▾ Expert properties

Period: M1 ▾ Symbol properties

Spread: 50 ▾ Open chart

Optimization Modify expert

